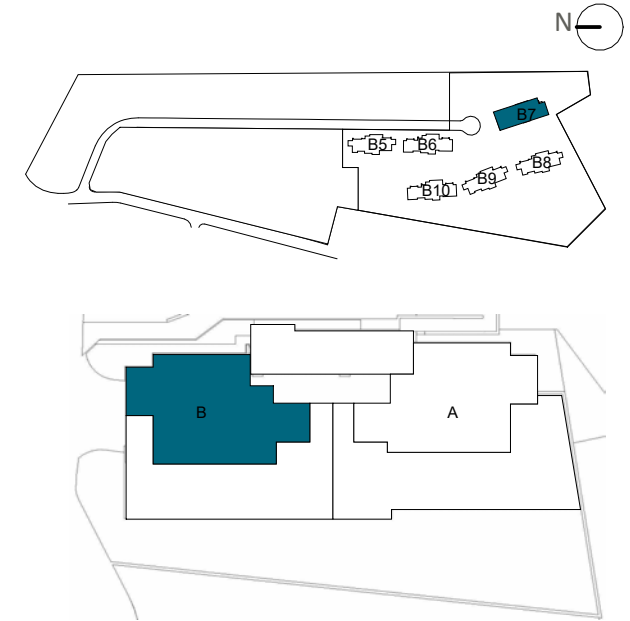


LOCATION



BLOCK 7

APPROXIMATE AREAS

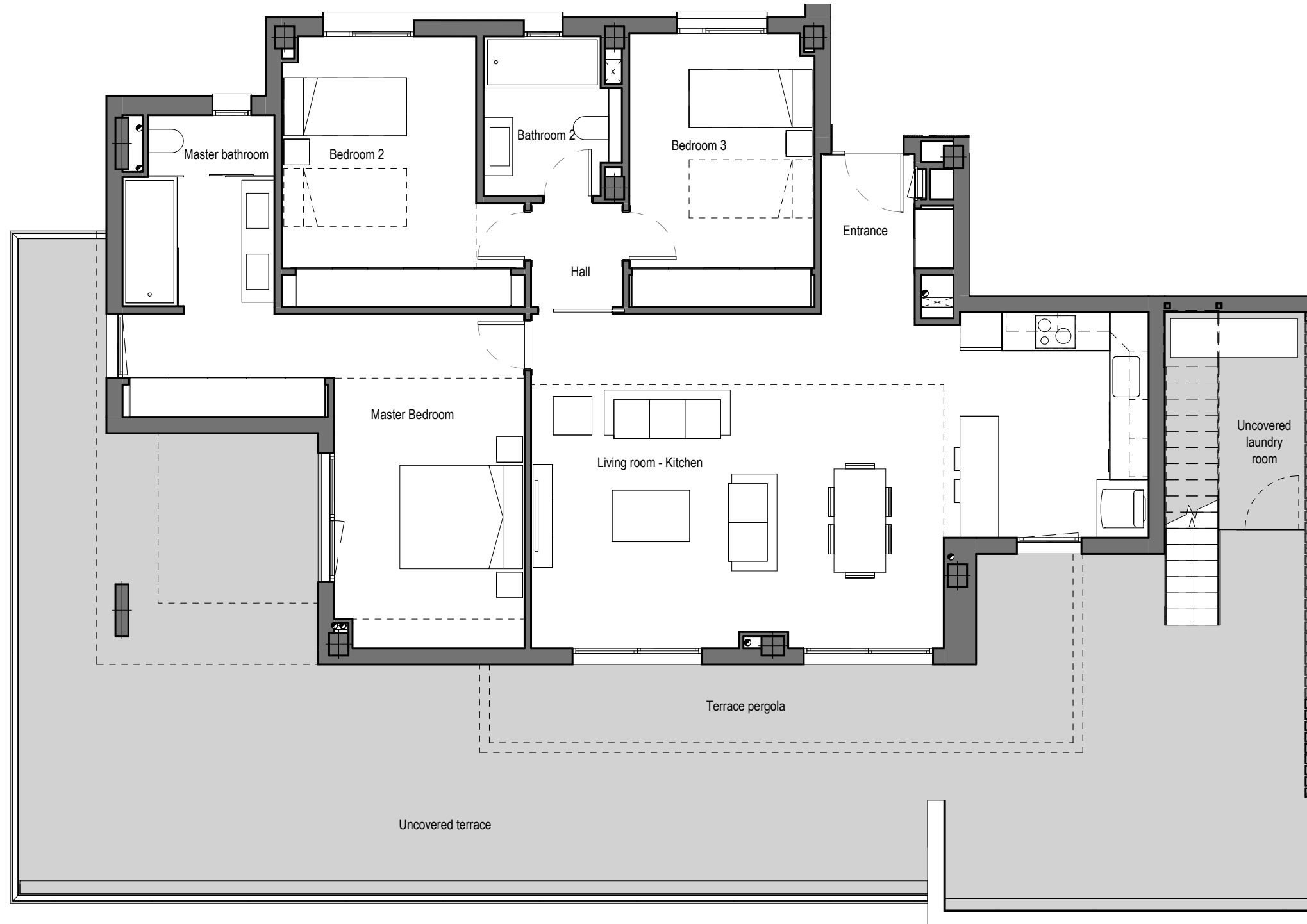
Entrance	4,19 m ²
Living room - Kitchen	43,82 m ²
Hall	2,28 m ²
Master Bedroom	20,31 m ²
Master bathroom	6,74 m ²
Bedroom 2	13,70 m ²
Bedroom 3	12,07 m ²
Bathroom 2	4,85 m ²
INTERNAL USEFUL FLOOR AREA	107,96 m²

INTERNAL BUILT AREA	127,11 m²
P.P. COMMON AREAS	39,09 m²
INTERNAL BUILT AREA INCLUDING PP. COMMON AREAS	166,20 m²

EXTERNAL AREAS	
Uncovered laundry room	6,75 m ²
Terrace pergola	21,11 m ²
Uncovered terrace	80,60 m ²
EXTERNAL USEFUL FLOOR AREA	108,46 m²

USEFUL FLOOR AREA SOLARIUM	71,20 m²
-----------------------------------	----------------------------

REGARDING DECRETO BOJA 218/2005	
TOTAL USEFUL FLOOR AREA	118,76 m ²
TOTAL BUILT AREA	177,00 m ²



Penthouse 72B

The information contained may be modified during the course of the work execution due to technical or legal requirements, without implying any reduction in the overall level of qualities. The access steps to the dwelling and exits to courtyards may be altered according to the level of the streets and it is up to the D.F. to set the criteria.
The pool represented in the commercial plan of the solarium floor, and infographics, is not included in the project, nor in the sale price. It is an option for buyers, the cost of which will be added to the purchase price.