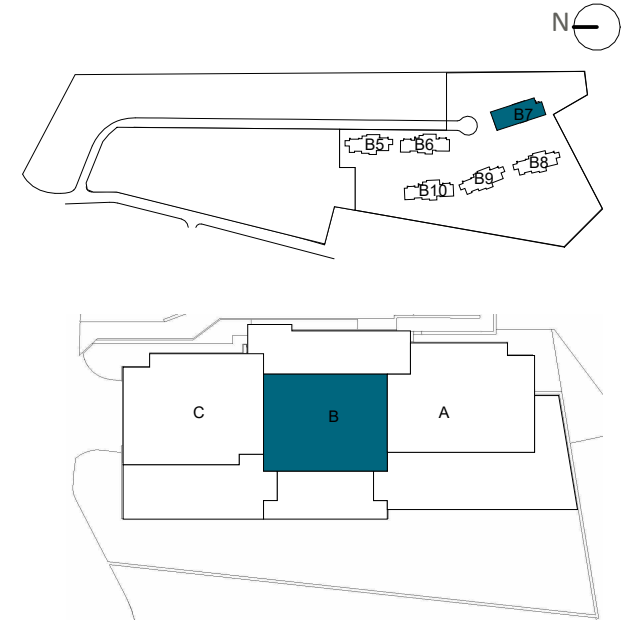


LOCATION



BLOCK 7

APPROXIMATE AREAS

Entrance	5,77 m ²
Living room - Kitchen	33,93 m ²
Hall	2,73 m ²
Master Bedroom	16,47 m ²
Master bathroom	6,19 m ²
Bedroom 2	12,60 m ²
Bathroom 2	4,87 m ²
INTERNAL USEFUL FLOOR AREA	82,56 m²

INTERNAL BUILT AREA	93,28 m ²
P.P. COMMON AREAS	29,90 m ²
INTERNAL BUILT AREA INCLUDING PP. COMMON AREAS	123,18 m²

EXTERNAL AREAS	
Covered terrace	33,54 m ²
Uncovered terrace	13,18 m ²
EXTERNAL USEFUL FLOOR AREA	46,72 m²

REGARDING DECRETO BOJA 218/2005	
TOTAL USEFUL FLOOR AREA	90,82 m ²
TOTAL BUILT AREA	131,43 m ²



Apartment 71B

The information contained may be modified during the course of the work execution due to technical or legal requirements, without implying any reduction in the overall level of qualities. The access steps to the dwelling and exits to courtyards may be altered according to the level of the streets and it is up to the D.F. to set the criteria.