



# ASPERIA.

PARQUE CENTRAL



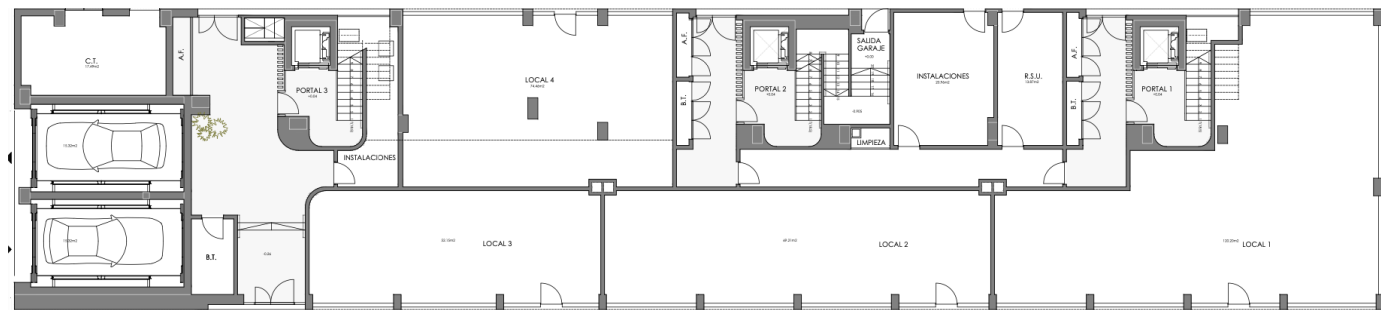




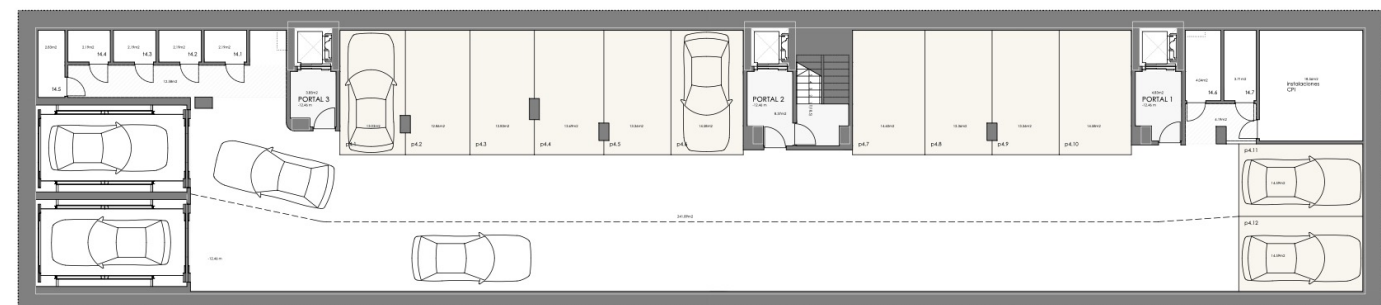
# ASPERIA.

GENERAL FLOOR PLANS

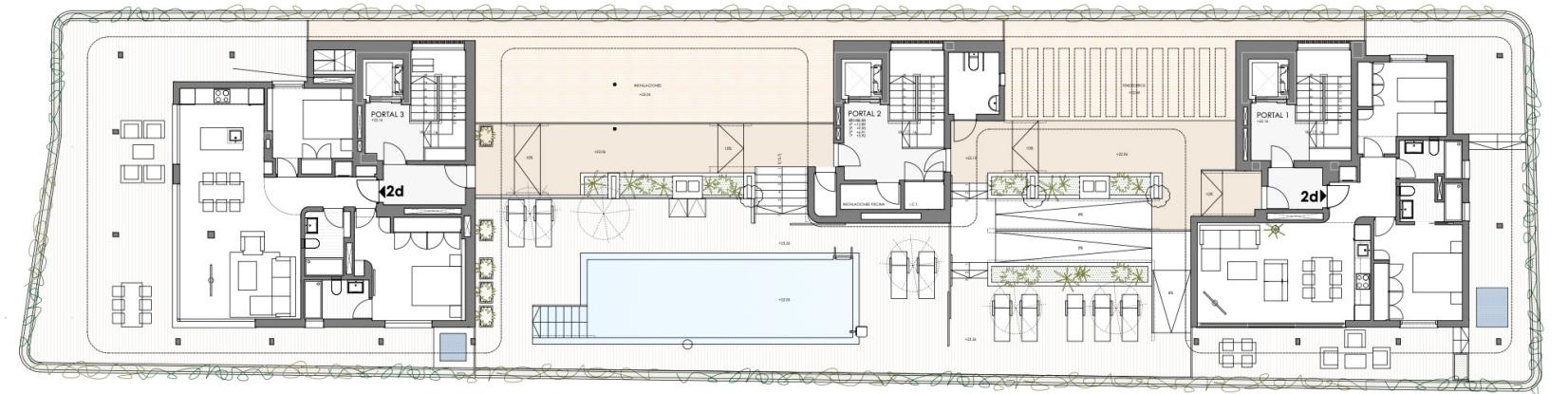
GROUND FLOOR:



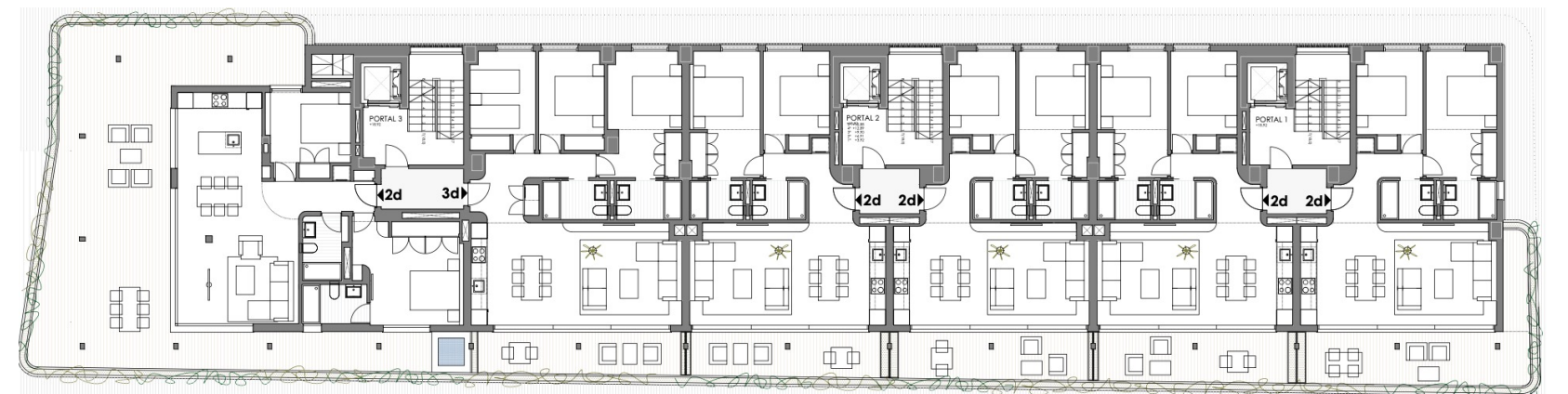
PARKING (4 FLOORS):



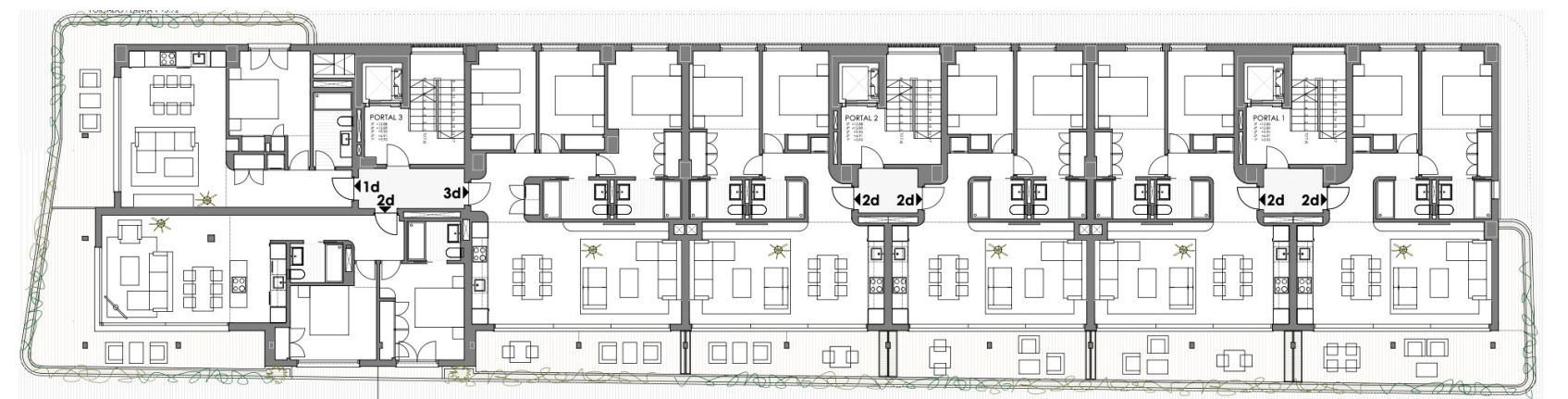
PENTHOUSE / TERRACE FLOOR:

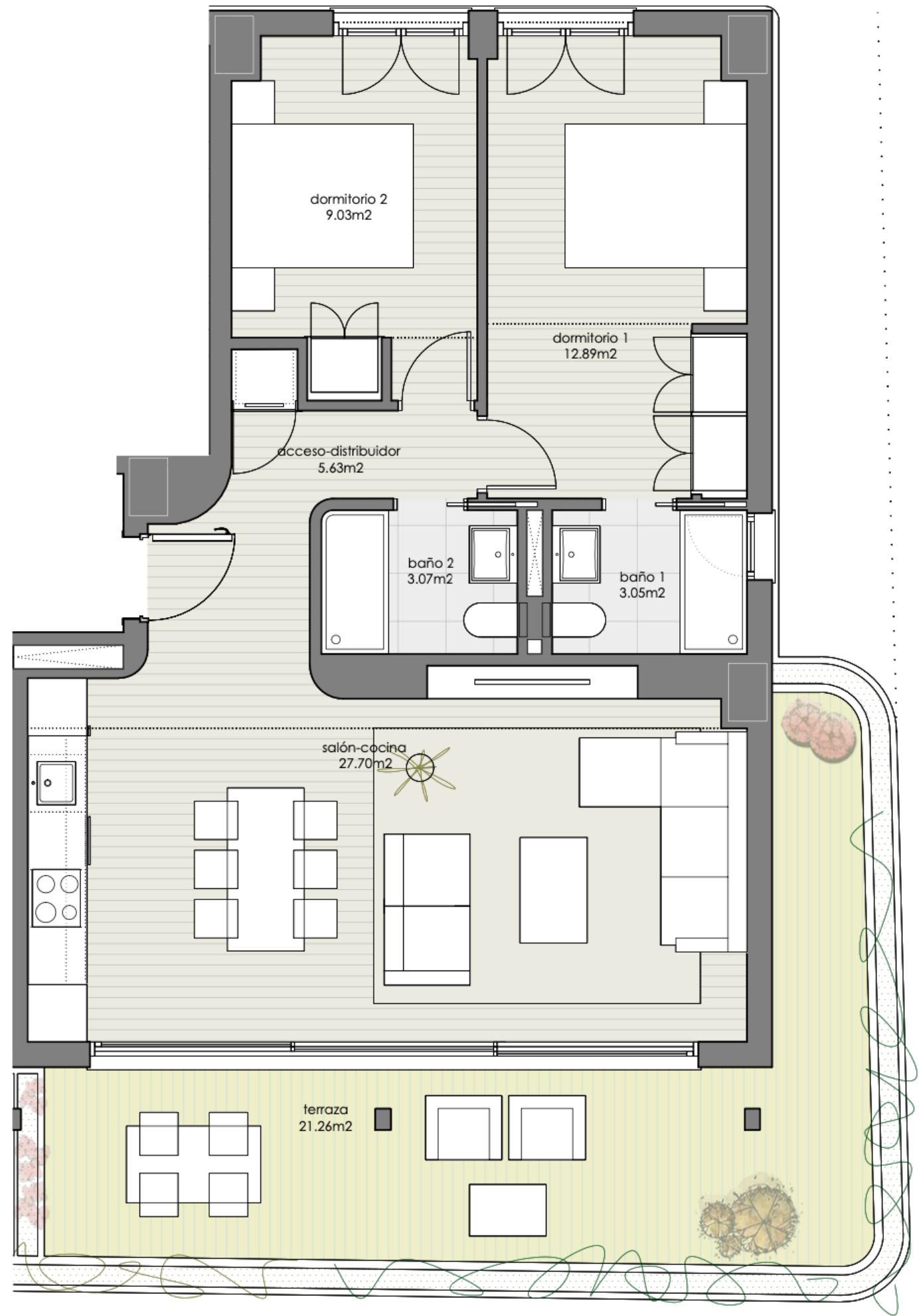


FLOOR 6:



FLOORS 1-5:





# ASPERIA.

PARQUE CENTRAL

## TYPE - 1

**Total Interior Surface: 72.99 m<sup>2</sup>**

**Living Room – Kitchen: 27.70 m<sup>2</sup>**

**Double Bedroom 1: 12.89 m<sup>2</sup>**

**Double Bedroom 2: 9.03 m<sup>2</sup>**

**Bathroom 1: 3.05 m<sup>2</sup>**

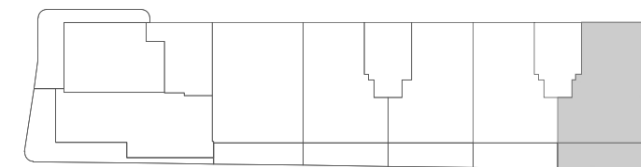
**Bathroom 2: 3.07 m<sup>2</sup>**

**Access – Hallway: 5.63 m<sup>2</sup>**

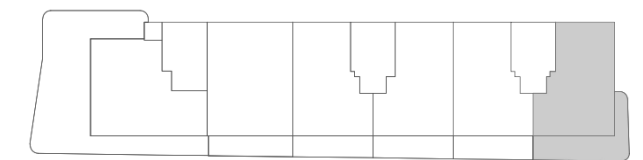
**Terrace: 21.26 m<sup>2</sup>**

### AVAILABLE APARTMENTS:

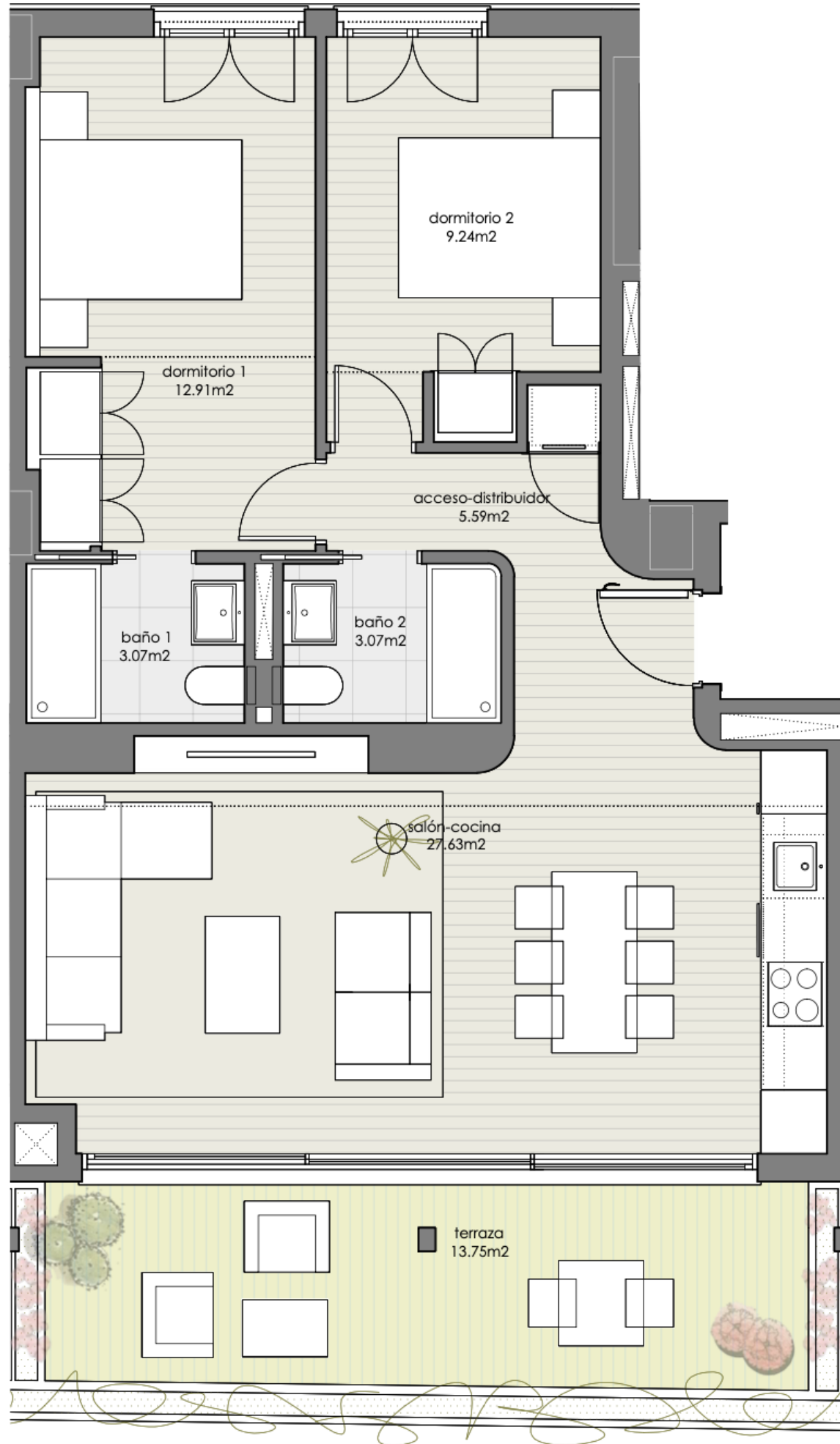
- 1-1: 325,000 €
- 2-1: 355,000 €
- 3-1: 435,000 €
- 4-1: 450,000 €
- 5-1: 465,000 €
- 6-1: 500,000 €



Planta tipo (1-2-3-4-5)



Planta sexta



ASPERIA.  
PARQUE CENTRAL

TYPE - 2

Total Interior Surface: 72.25 m<sup>2</sup>

Living Room – Kitchen: 27.63 m<sup>2</sup>

Double Bedroom 1: 12.91 m<sup>2</sup>

Double Bedroom 2: 9.24 m<sup>2</sup>

Bathroom 1: 3.07 m<sup>2</sup>

Bathroom 2: 3.07 m<sup>2</sup>

Access – Hallway: 5.59 m<sup>2</sup>

Terrace: 13.75 m<sup>2</sup>

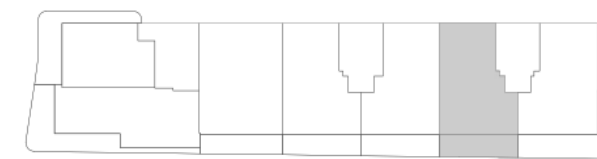
AVAILABLE APARTMENTS:

3-2: 410,000 €

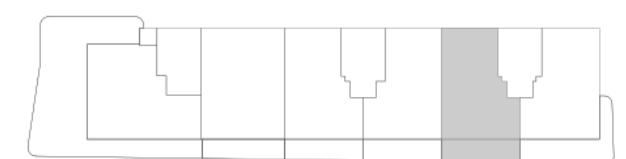
4-2: 425,000 €

5-2: 440,000 €

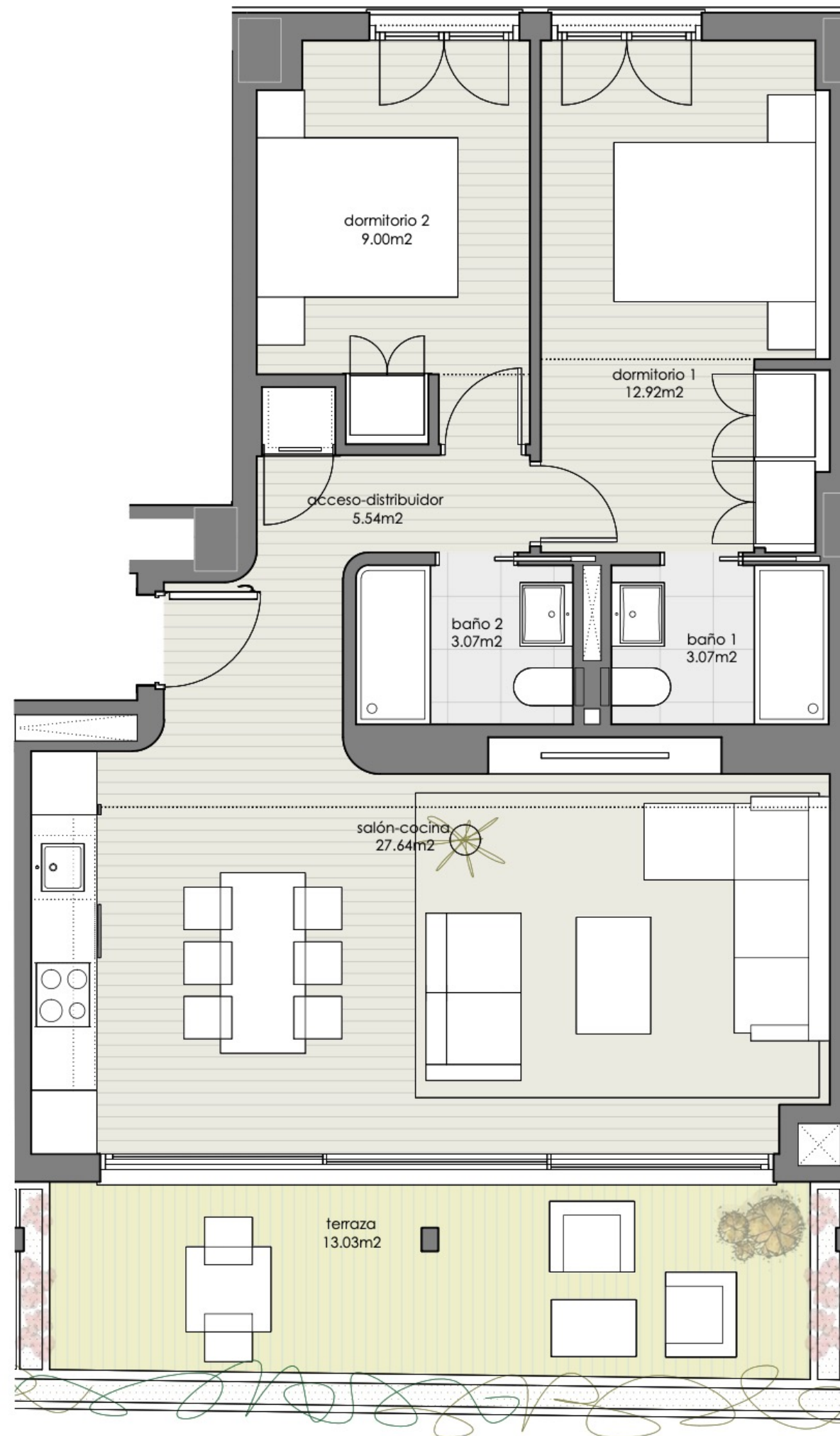
6-2: 480,000 €



Planta tipo (1-2-3-4-5)



Planta sexta



# ASPERIA.

PARQUE CENTRAL

## TYPE - 3

**Total Interior Surface: 72.04 m<sup>2</sup>**

Living Room – Kitchen: 27.64 m<sup>2</sup>

Double Bedroom 1: 12.92 m<sup>2</sup>

Double Bedroom 2: 9.00 m<sup>2</sup>

Bathroom 1: 3.07 m<sup>2</sup>

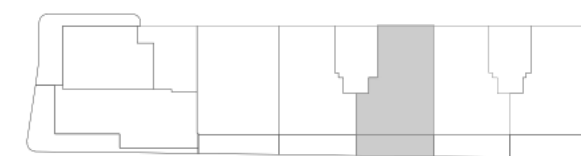
Bathroom 2: 3.07 m<sup>2</sup>

Access – Hallway: 5.54 m<sup>2</sup>

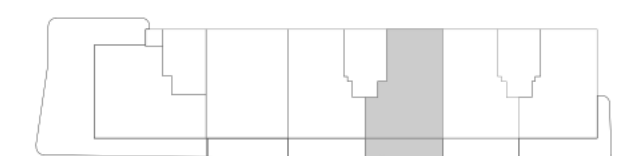
**Terrace: 13.03 m<sup>2</sup>**

### AVAILABLE APARTMENTS:

1-3:	299,000€
2-3:	330,000€
3-3:	410,000€
4-3:	425,000€
5-3:	440,000€
6-3:	480,000€

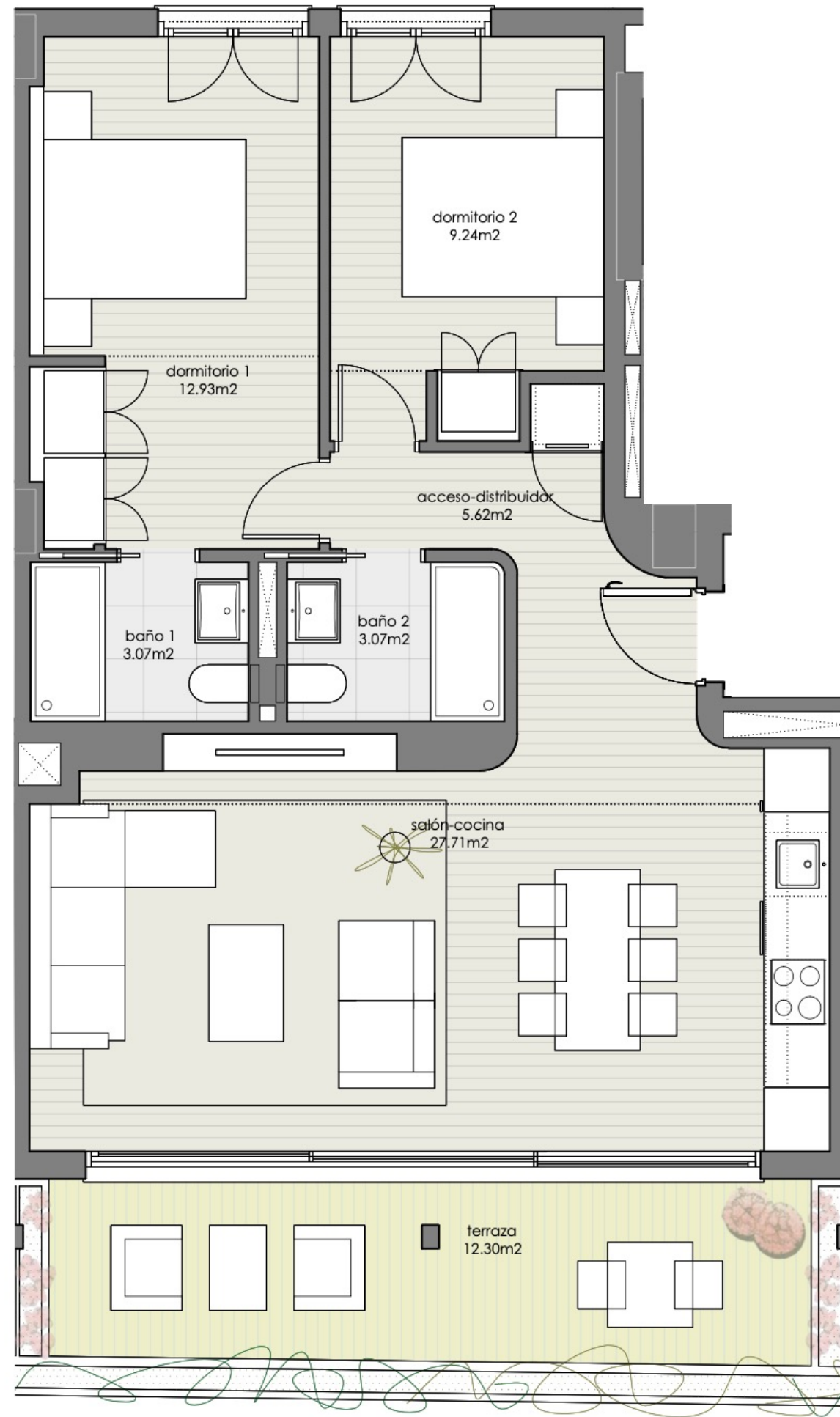


Planta tipo (1-2-3-4-5)



Planta sexta





# ASPERIA.

PARQUE CENTRAL

## TYPE - 4

**Total Interior Surface: 72.25 m<sup>2</sup>**

Living Room – Kitchen: 27.71 m<sup>2</sup>

Double Bedroom 1: 12.93 m<sup>2</sup>

Double Bedroom 2: 9.24 m<sup>2</sup>

Bathroom 1: 3.07 m<sup>2</sup>

Bathroom 2: 3.07 m<sup>2</sup>

Access – Hallway: 5.59 m<sup>2</sup>

**Terrace: 12.30 m<sup>2</sup>**

### AVAILABLE APARTMENTS:

3-4: 410,000 €

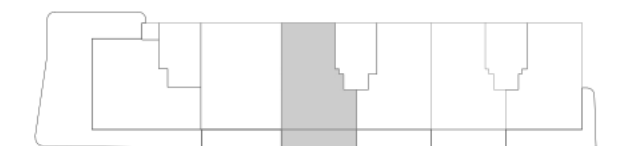
4-4: 425,000 €

5-4: 440,000 €

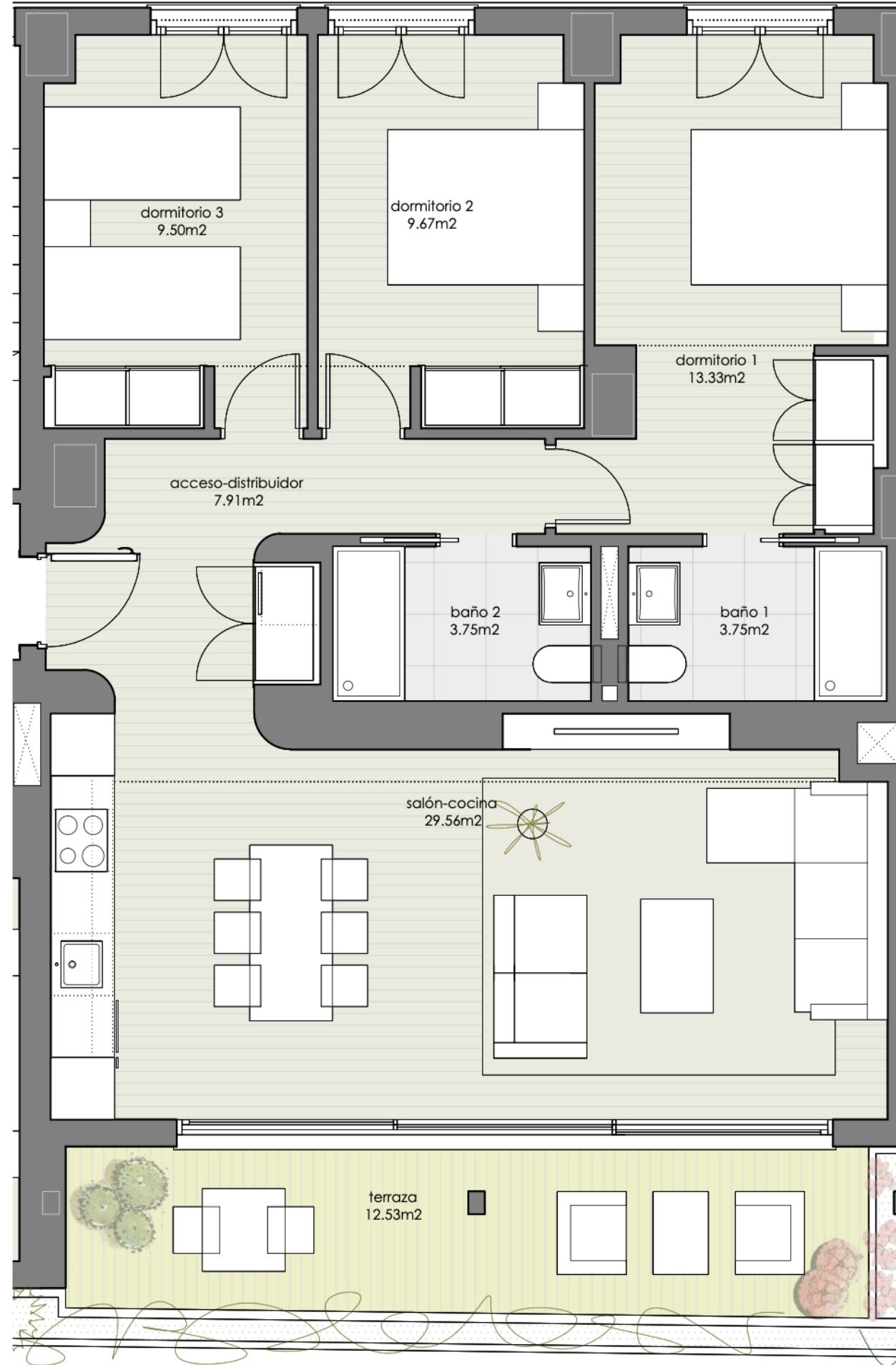
6-4: 480,000 €



Planta tipo (1-2-3-4-5)



Planta sexta



ASPERIA.  
PARQUE CENTRAL

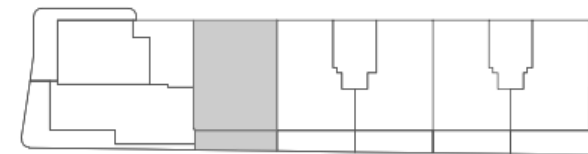
TYPE - 5

- Total Interior Surface: 91.92 m<sup>2</sup>
- Living Room – Kitchen: 29.56 m<sup>2</sup>
- Double Bedroom 1: 13.33 m<sup>2</sup>
- Double Bedroom 2: 9.67 m<sup>2</sup>
- Double Bedroom 3: 9.50 m<sup>2</sup>
- Bathroom 1: 3.75 m<sup>2</sup>
- Bathroom 2: 3.75 m<sup>2</sup>
- Access – Hallway: 7.91 m<sup>2</sup>

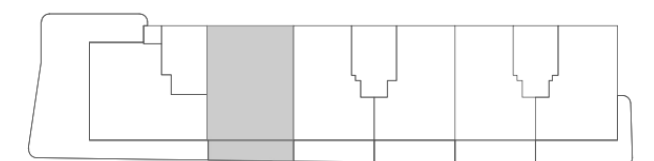
Terrace: 12.53 m<sup>2</sup>

AVAILABLE APARTMENTS:

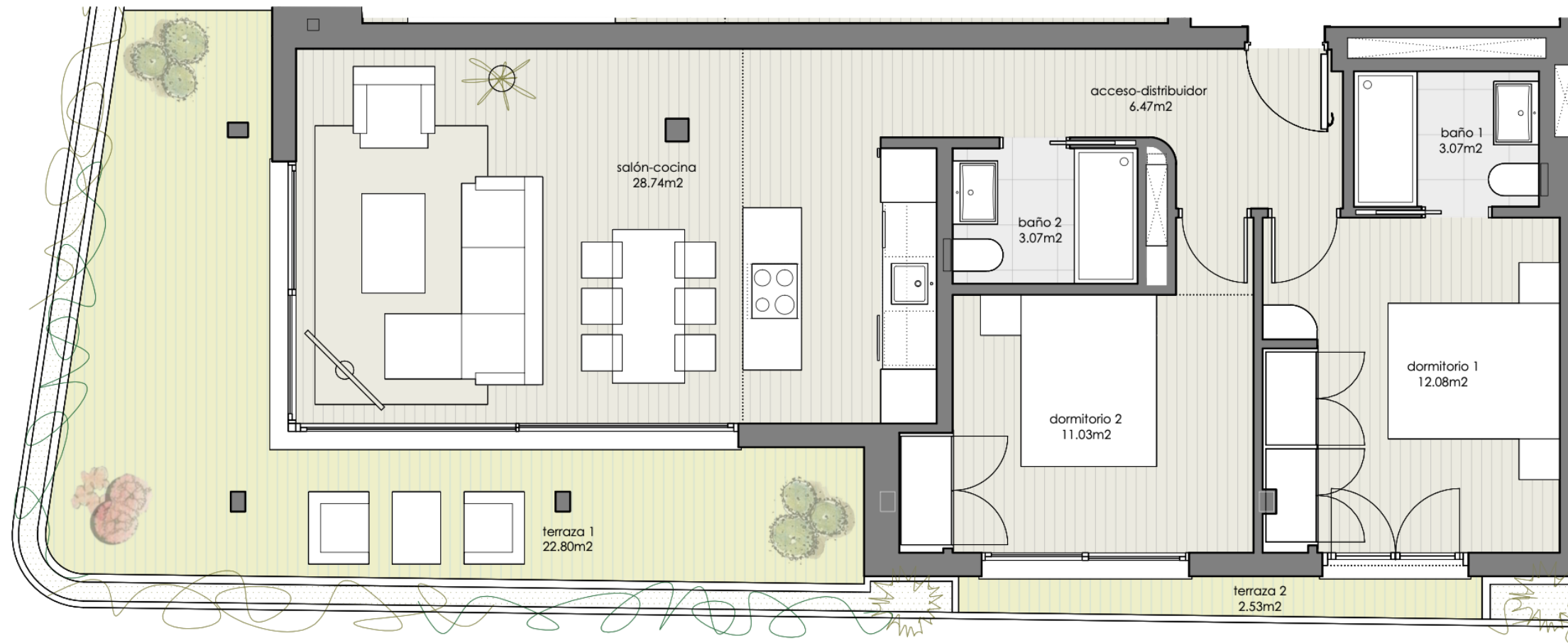
- 1-5: 395,000 €
- 2-5: 420,000 €
- 3-5: 500,000 €
- 4-5: 520,000 €
- 5-5: 540,000 €
- 6-5: 580,000 €



Planta tipo (1-2-3-4-5)



Planta sexta



# ASPERIA.

PARQUE CENTRAL

## TYPE - 6

**Total Interior Surface: 75.67 m<sup>2</sup>**

Living Room – Kitchen: 28.74 m<sup>2</sup>

Double Bedroom 1: 12.08 m<sup>2</sup>

Double Bedroom 2: 11.03 m<sup>2</sup>

Bathroom 1: 3.07 m<sup>2</sup>

Bathroom 2: 3.07 m<sup>2</sup>

Access – Hallway: 6.47 m<sup>2</sup>

**Terrace 1: 22.80 m<sup>2</sup>**

**Terrace 2: 2.53 m<sup>2</sup>**

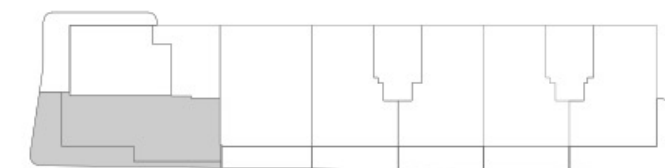
### AVAILABLE APARTMENTS:

2-6: 380,000 €

3-6: 520,000 €

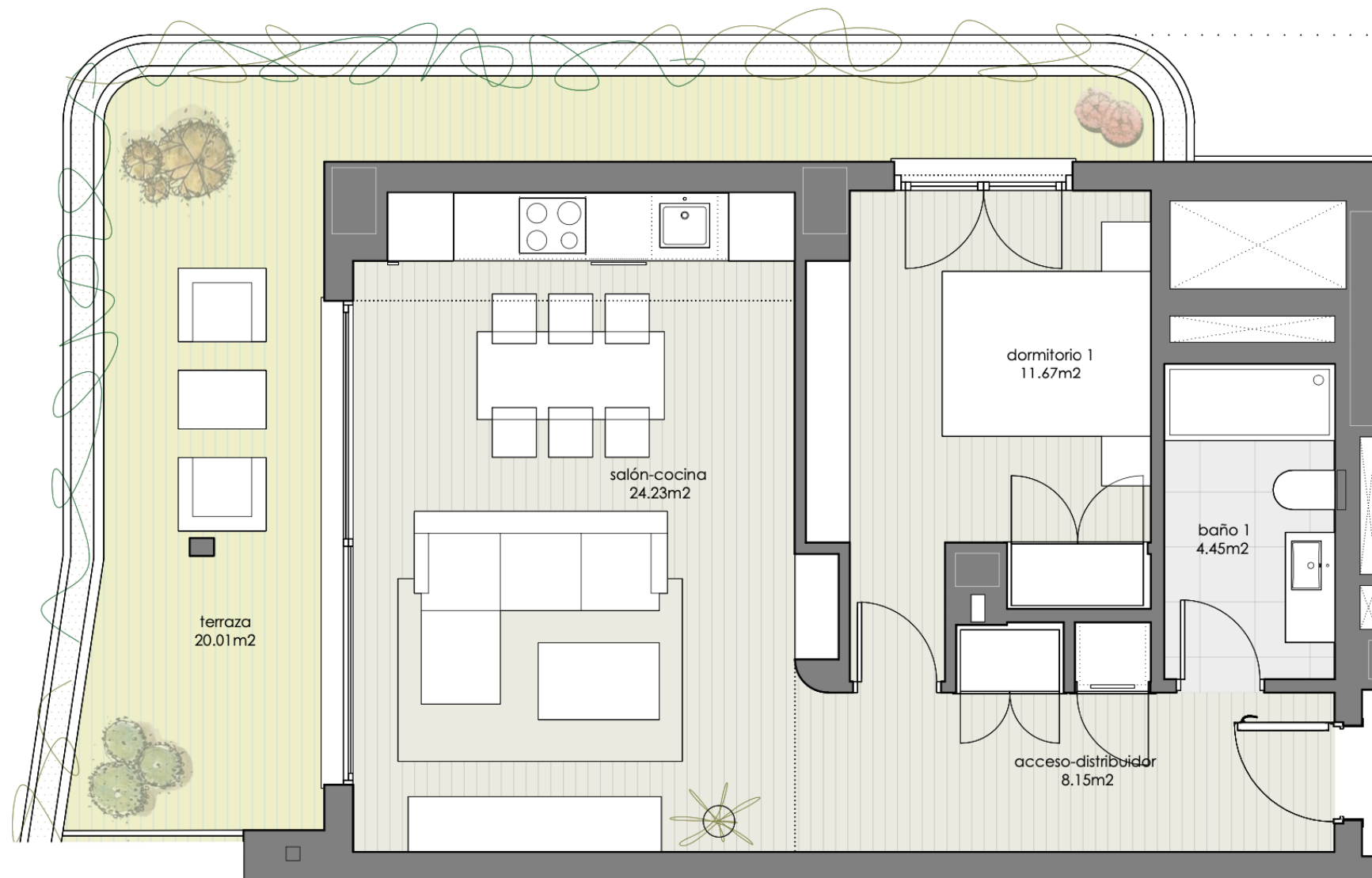
4-6: 550,000 €

5-6: 580,000 €



Planta tipo (1-2-3-4-5)





# ASPERIA.

PARQUE CENTRAL

## TYPE - 7

**Total Interior Surface: 56.21 m<sup>2</sup>**

**Living Room – Kitchen: 24.23 m<sup>2</sup>**

**Double Bedroom 1: 11.67 m<sup>2</sup>**

**Bathroom 1: 4.45 m<sup>2</sup>**

**Access – Hallway: 8.15 m<sup>2</sup>**

**Terrace: 20.01 m<sup>2</sup>**

### AVAILABLE APARTMENTS:

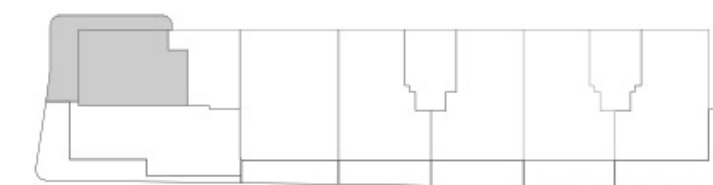
1-7: 265,000€

2-7: 295,000€

3-7: 385,000€

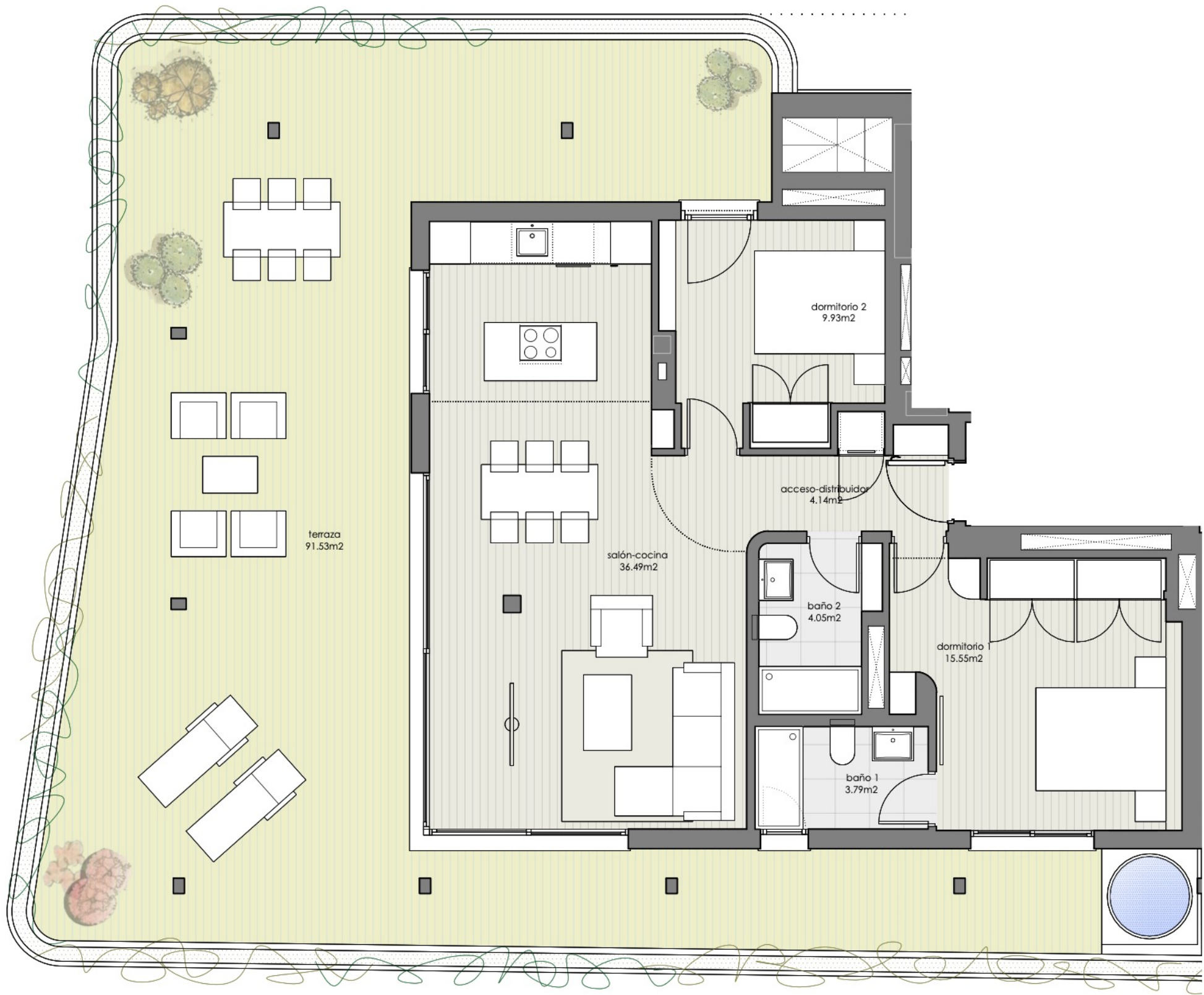
4-7: 400,000€

5-7: 430,000€



Planta tipo (1-2-3-4-5)

NOTA: El presente documento es de carácter informativo. Los planos y superficies expresadas podrán experimentar variaciones por exigencias técnicas del proyecto.



# ASPERIA.

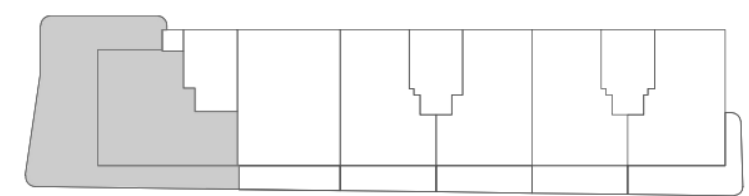
PARQUE CENTRAL

6 - 6

- Total Interior Surface: 85.94 m<sup>2</sup>**
- Living Room – Kitchen: 36.49 m<sup>2</sup>
- Double Bedroom 1: 15.55 m<sup>2</sup>
- Double Bedroom 2: 9.93 m<sup>2</sup>
- Bathroom 1: 3.79 m<sup>2</sup>
- Bathroom 2: 4.05 m<sup>2</sup>
- Access – Hallway: 4.14 m<sup>2</sup>
  
- Terrace: 91.53 m<sup>2</sup>**

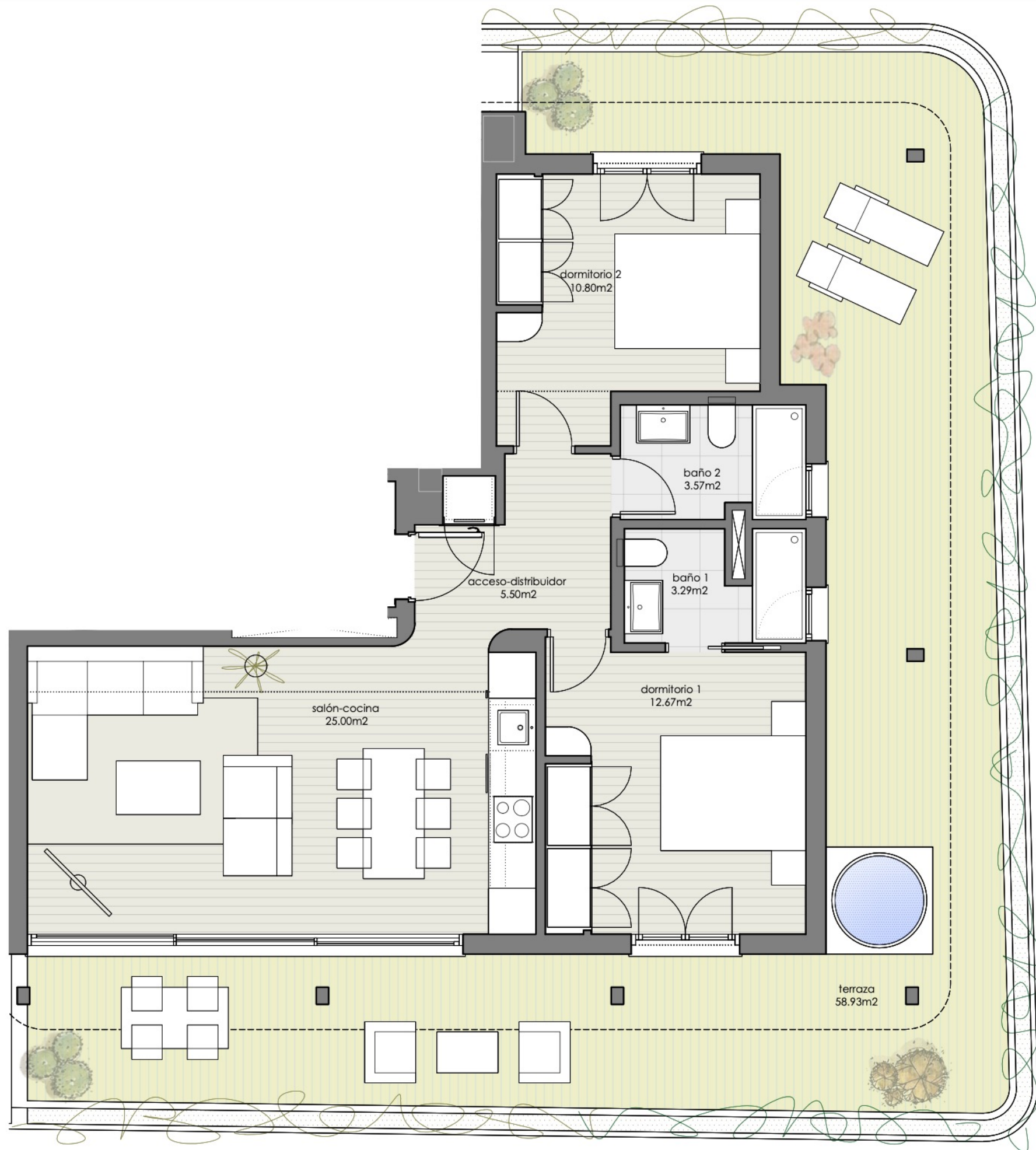
**AVAILABLE APARTMENTS:**

6-6: 850,000€



Planta sexta





# ASPERIA.

PARQUE CENTRAL

7 - 1

**Total Interior Surface: 72.03 m<sup>2</sup>**

Living Room – Kitchen: 25.00 m<sup>2</sup>

Double Bedroom 1: 12.67 m<sup>2</sup>

Double Bedroom 2: 10.80 m<sup>2</sup>

Bathroom 1: 3.29 m<sup>2</sup>

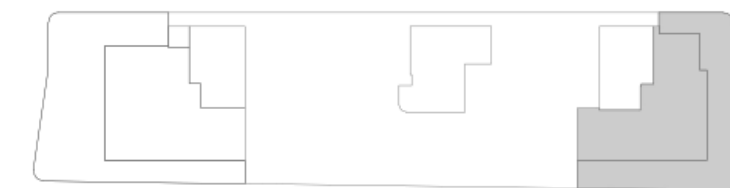
Bathroom 2: 3.57 m<sup>2</sup>

Access – Hallway: 5.50 m<sup>2</sup>

**Terrace: 58.93 m<sup>2</sup>**

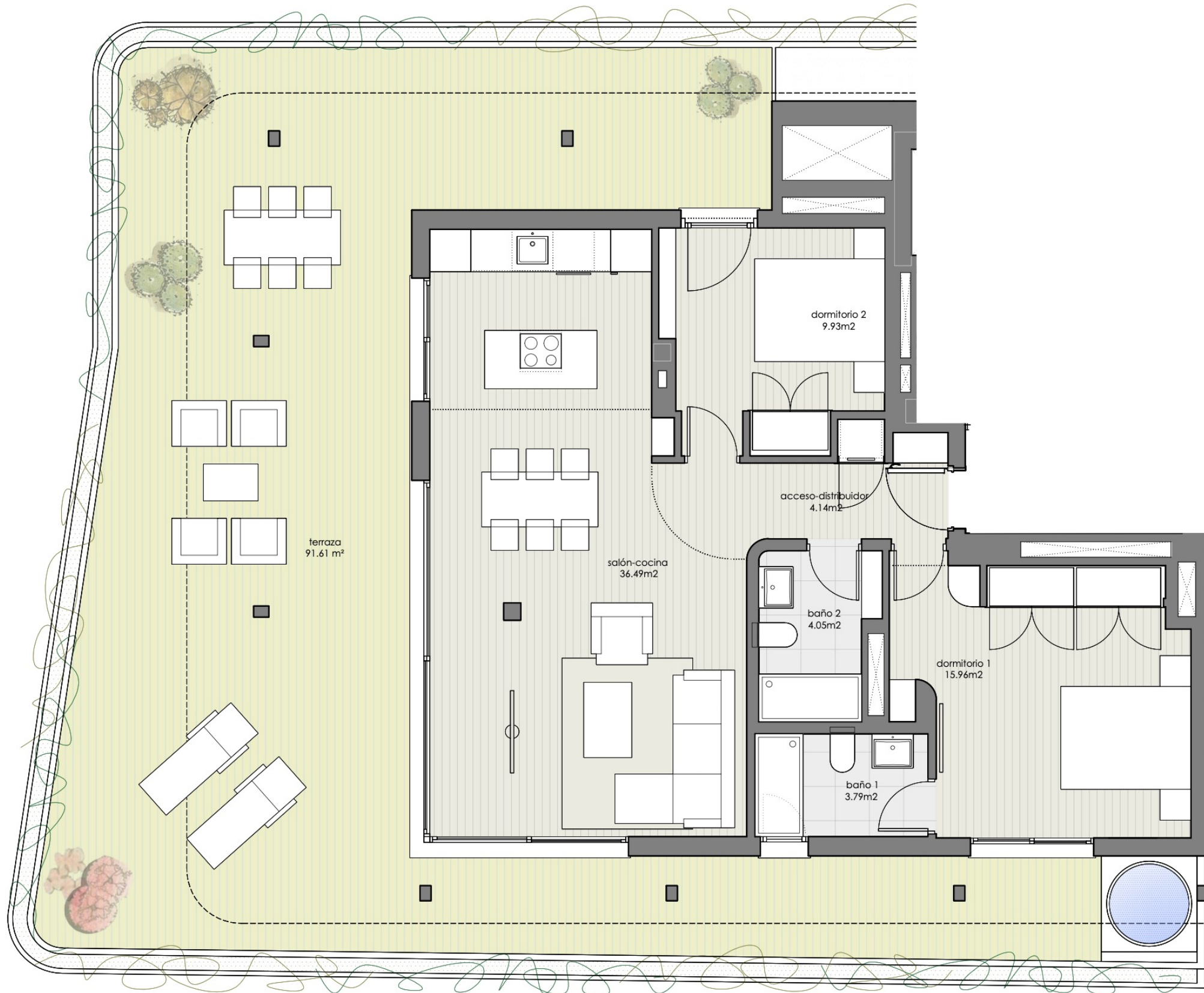
AVAILABLE APARTMENTS:

7-1: 850,000€



Planta séptima / ático

NOTA: El presente documento es de carácter informativo. Los planos y superficies expresadas podrán experimentar variaciones por exigencias técnicas del proyecto.



# ASPERIA.

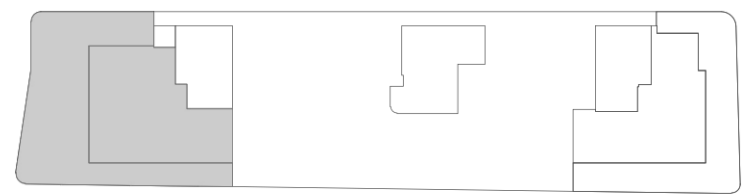
PARQUE CENTRAL

7 - 2

- Total Interior Surface: 86.58 m<sup>2</sup>
- Living Room – Kitchen: 36.49 m<sup>2</sup>
- Double Bedroom 1: 15.96 m<sup>2</sup>
- Double Bedroom 2: 9.93 m<sup>2</sup>
- Bathroom 1: 3.79 m<sup>2</sup>
- Bathroom 2: 4.05 m<sup>2</sup>
- Access – Hallway: 4.14 m<sup>2</sup>
  
- Terrace: 91.61 m<sup>2</sup>

### AVAILABLE APARTMENTS:

7-2: 900,000€



Planta séptima / ático





ASPERIA.

THE ART OF TRANQUIL URBAN LIVING

## CONTACT

<b>E-mail</b>	<a href="mailto:info@asperia.es">info@asperia.es</a>
<b>Website</b>	<a href="http://www.asperia.es">www.asperia.es</a>
<b>Phone</b>	+34 673 46 03 80
<b>Address</b>	Parque Central, Estepona