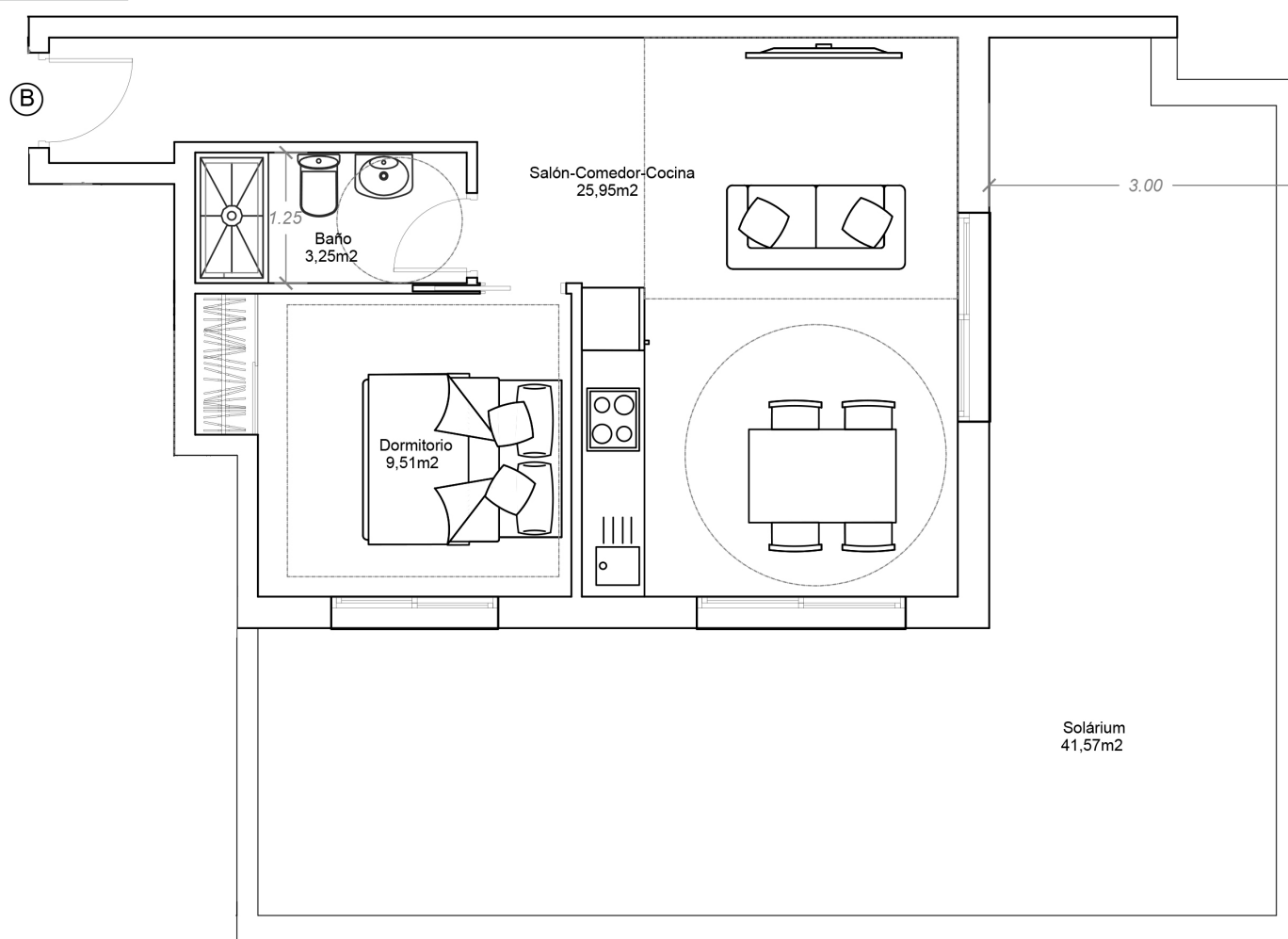


## Apartment nº Atico B

Apartamento nº Atico B



| PLANTA 5 – ÁTICO    |                  |                         |
|---------------------|------------------|-------------------------|
| Vivienda A          | Sup. Útil:       | 32,34 m <sup>2</sup>    |
|                     | Sup. Construida: | 37,50 m <sup>2</sup>    |
| SUP. TOTAL EDIFICIO | Sup. Útil:       | 814,63 m <sup>2</sup>   |
|                     | Sup. Construida: | 1.027,83 m <sup>2</sup> |



cbm-homes.com  
(+34) 645 835 127



**CBM HOMES**  
COSTA BLANCA MEDITERRANEAN HOMES



Surface  
**87,64 m<sup>2</sup>**



Bedroom  
**x 1**



Bathroom  
**x 1**



Efficiency  
**A+**



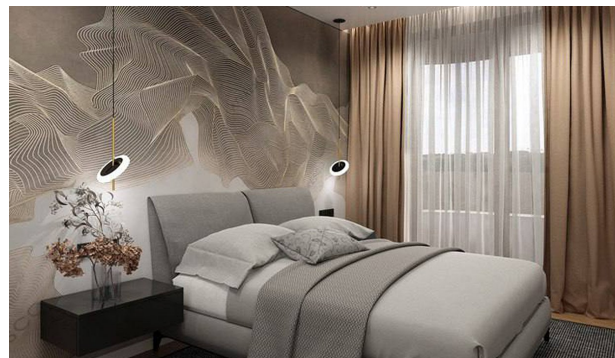
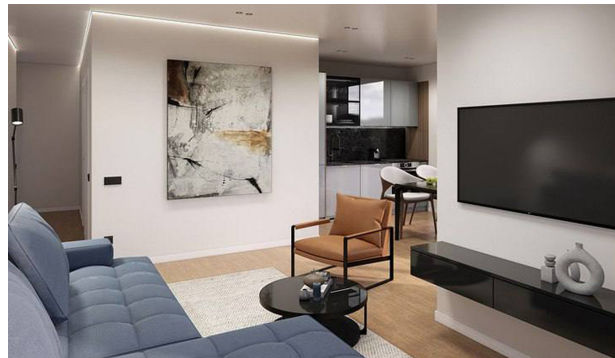
Clima &  
Heating



High  
quality



\* The promotor reserves the rights to change any elements for items with similar or higher value \*\*images without contractual value  
\*La promotora se reserva el derecho a variar cualquier elemento por otro similar o de mayor valor \*\*imagenes sin valor contractual



| PLANTA 5 – ÁTICO    |                  |             |
|---------------------|------------------|-------------|
| Vivienda A          | Sup. Útil:       | 32,34 m2    |
|                     | Sup. Construida: | 37,50 m2    |
| Vivienda B          | Sup. Útil:       | 38,71 m2    |
|                     | Sup. Construida: | 46,07 m2    |
| Zona Común          | Sup. Útil:       | 16,48 m2    |
|                     | Sup. Construida: | 35,55 m2    |
| SUP. P. 5 – ÁTICO   | Sup. Útil:       | 87,53 m2    |
|                     | Sup. Construida: | 119,12 m2   |
| SUP. TOTAL EDIFICIO | Sup. Útil:       | 814,63 m2   |
|                     | Sup. Construida: | 1.027,83 m2 |

cbm-homes.com  
(+34) 645 835 127



Surface  
**87,64 m<sup>2</sup>**



Bedroom  
**x 1**



Bathroom  
**x 1**



Efficiency  
**A+**



Clima &  
Heating



High  
quality



\* The promotor reserves the rights to change any elements for items with similar or higher value \*\*images without contractual value  
\*La promotora se reserva el derecho a variar cualquier elemento por otro similar o de mayor valor \*\*imagenes sin valor contractual