



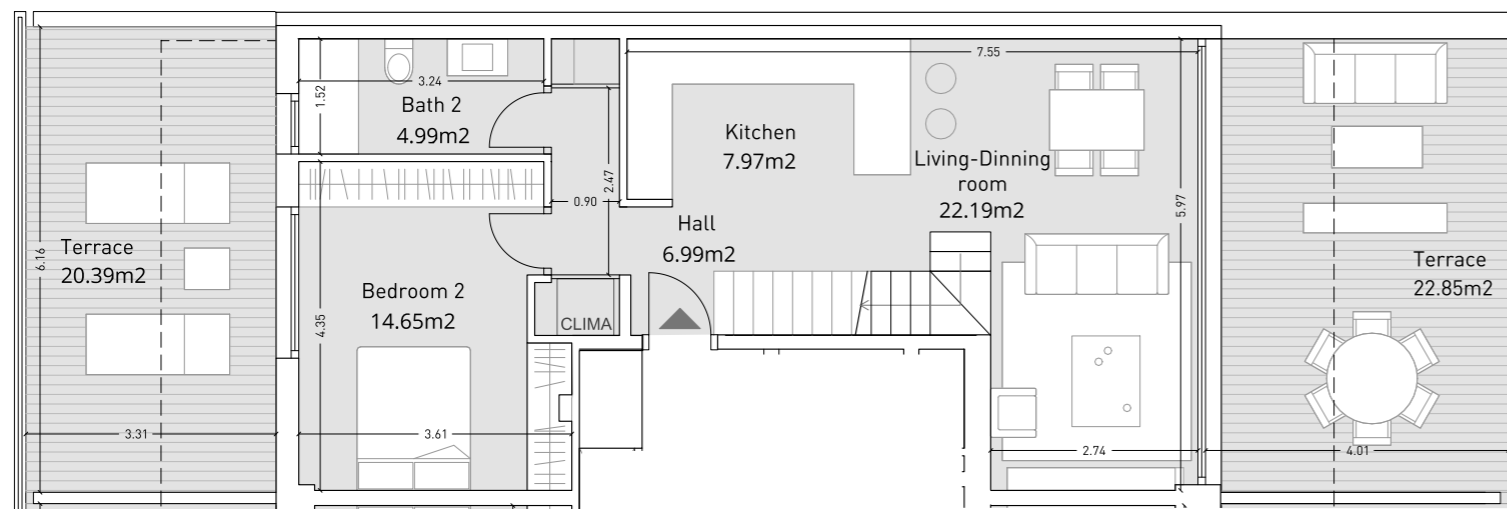
ISEA
ESTEPONA

Apartment 3.6B

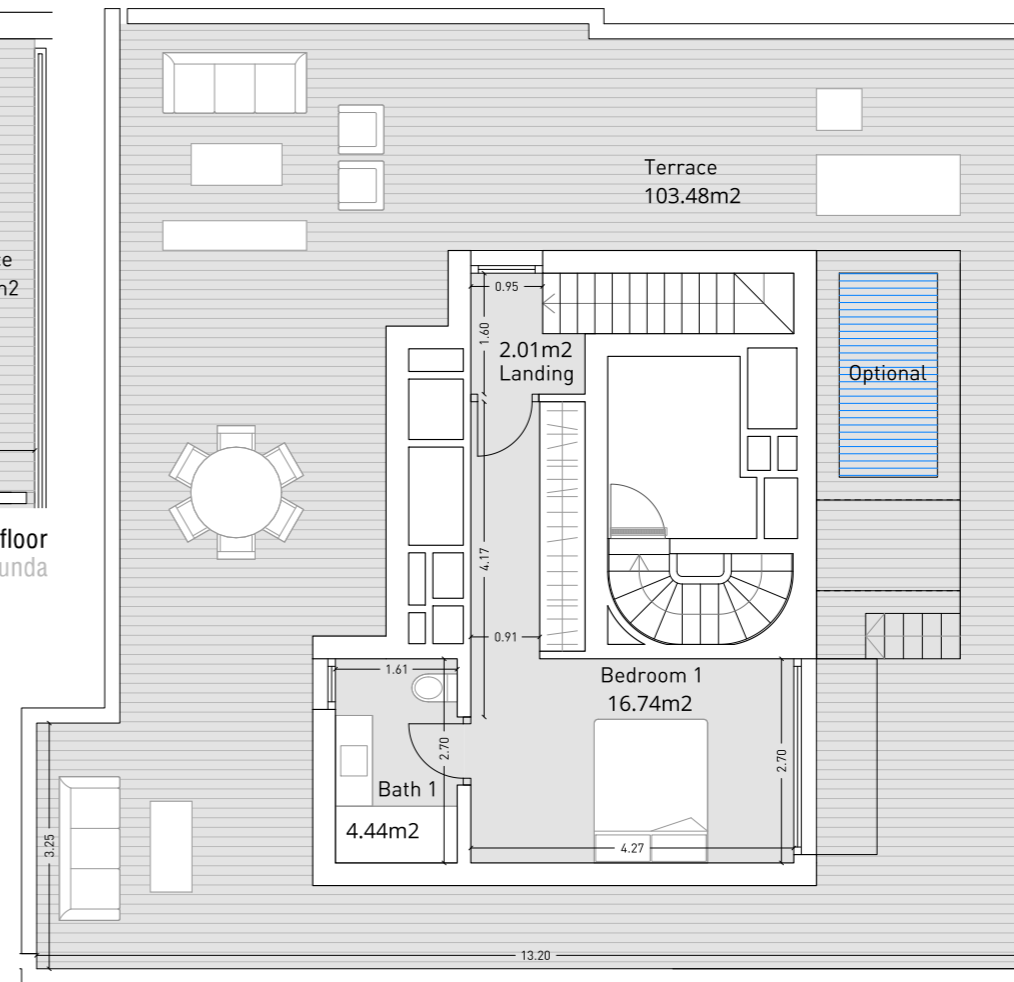
Vivienda

Second & Penthouse floor. Block B
Planta Segunda & Ático. Bloque B

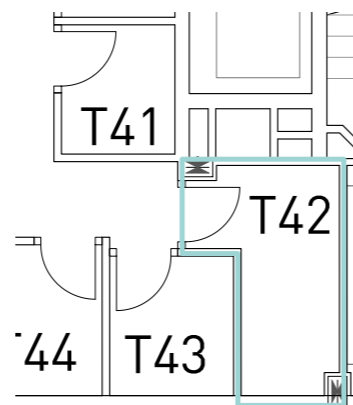
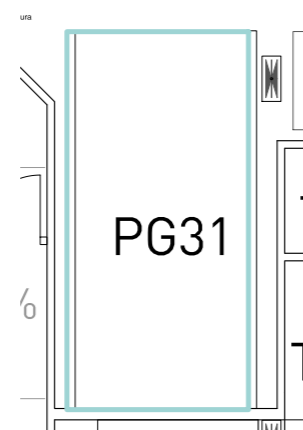
Enclosed Built Area Sup. Construida Cerrada	102,47 sqm.
Terrace Built Area Sup. Construida Terraza	156,94 sqm.
Common Areas Built Area Sup. Construida Zona Común	116,75 sqm.
Usable Area Sup. útil vivienda	79,98 sqm.
Usable Area (Decreto 218/2015) Sup. útil vivienda (Decreto 218/2015)	96,68 sqm.



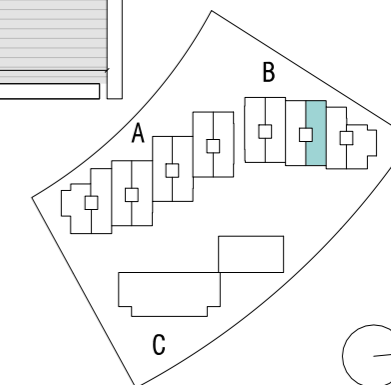
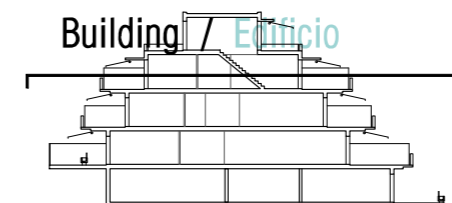
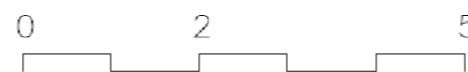
Second floor
Planta segunda



Penthouse floor
Planta atico



Garage and storage room
Plaza de garaje y trastero



DEVELOPER: QIP ARROYO ENMEDIO R5, S.L.U, Calle Periodista Pirula Arderius n 4 - 03001 Alicante B-42612861

NOTE: This plan is provisional and subject to any changes that may arise from licensing requirements or technical management criteria, without compromising quality. The furniture and household items that appear in the plan, including furniture, wardrobes and appliances, are merely for decorative purposes and are not included in the apartment. The location of the bathroom fixtures may vary slightly depending on the final assembly. The imperative determinations of the Project or by implications works of the execution, can change the exact position of the facade of doors and windows, as well the surface area may also be increased or even decrease not more than a 10%. This is a non-contractual document.

SALES & INFORMATION
+34 690 000 444
iseaestepona.com