



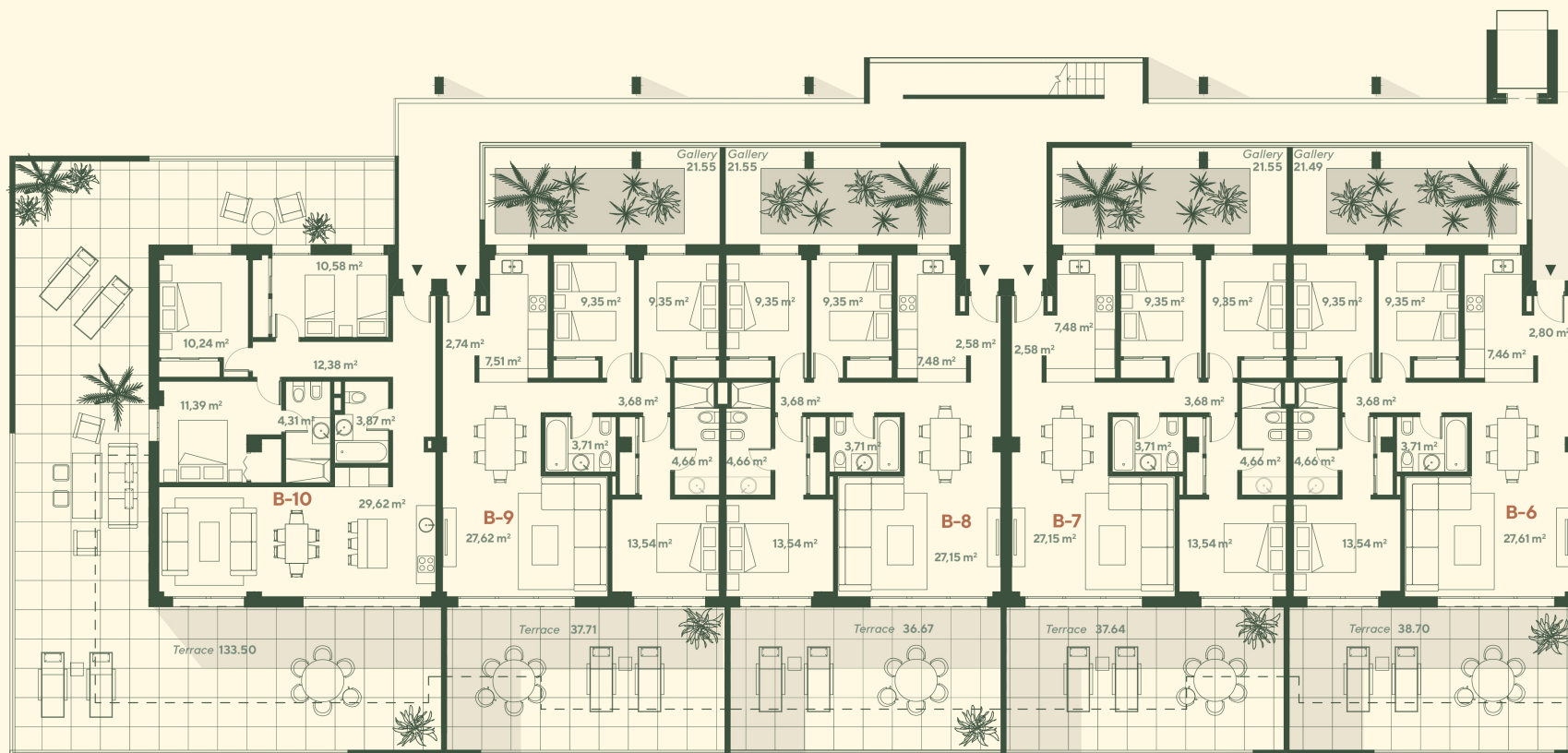
Block 2

Ground floor



Rayos del Sol

Apartments



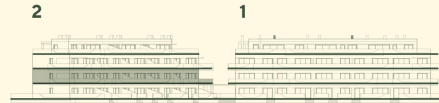
SEA VIEW

	Apartment B-10		Apartment B-9		Apartment B-8		Apartment B-7		Apartment B-6	
	useful area:	build area:	useful area:	build area:	useful area:	build area:	useful area:	build area:	useful area:	build area:
apartment	82,39 m ²	97,42 m ²	82,16 m ²	95,2 m ²	81,5 m ²	95,2 m ²	81,5 m ²	95,2 m ²	82,16 m ²	97,17 m ²
Covered terrace	38,7 m ²	38,86 m ²	24,04 m ²	24,43 m ²	26,2 m ²	26,66 m ²	23,89 m ²	24,29 m ²	25,65 m ²	26,25 m ²
Uncovered terrace	94,8 m ²	101,59 m ²	35,22 m ²	38,19 m ²	32,02 m ²	34,88 m ²	35,3 m ²	38,26 m ²	34,54 m ²	37,67 m ²
total area	215,89 m ²	237,87 m ²	141,42 m ²	157,82 m ²	139,72 m ²	156,74 m ²	140,69 m ²	157,75 m ²	142,35 m ²	161,09 m ²



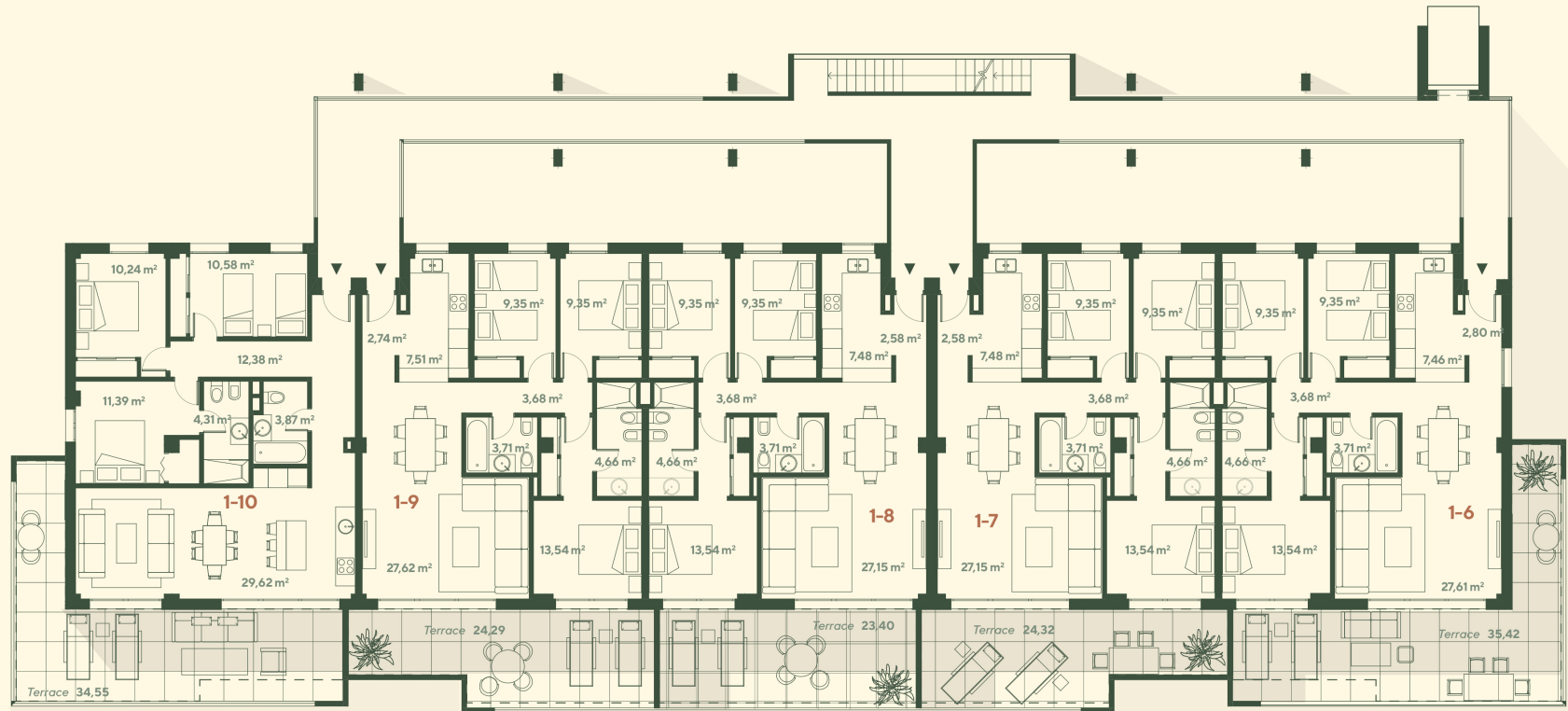
Block 2

1 floor



Rayos del Sol

Apartments



SEA VIEW

	Apartment 1-10		Apartment 1-9		Apartment 1-8		Apartment 1-7		Apartment 1-6	
	useful area:	build area:	useful area:	build area:	useful area:	build area:	useful area:	build area:	useful area:	build area:
apartment	82,39 m ²	97,42 m ²	82,17 m ²	95,2 m ²	81,51 m ²	95,2 m ²	81,5 m ²	95,2 m ²	82,16 m ²	97,17 m ²
Covered terrace	31,72 m ²	34,09 m ²	23,44 m ²	24,45 m ²	22,22 m ²	22,66 m ²	23,46 m ²	24,48 m ²	32,59 m ²	35,03 m ²
Uncovered terrace	2,83 m ²	3,6 m ²	0,85 m ²	1,78 m ²	1,17 m ²	2,39 m ²	0,86 m ²	1,78 m ²	2,83 m ²	3,6 m ²
total area	116,94 m²	135,11 m²	106,46 m²	121,43 m²	104,9 m²	120,25 m²	105,82 m²	121,46 m²	117,58 m²	135,8 m²



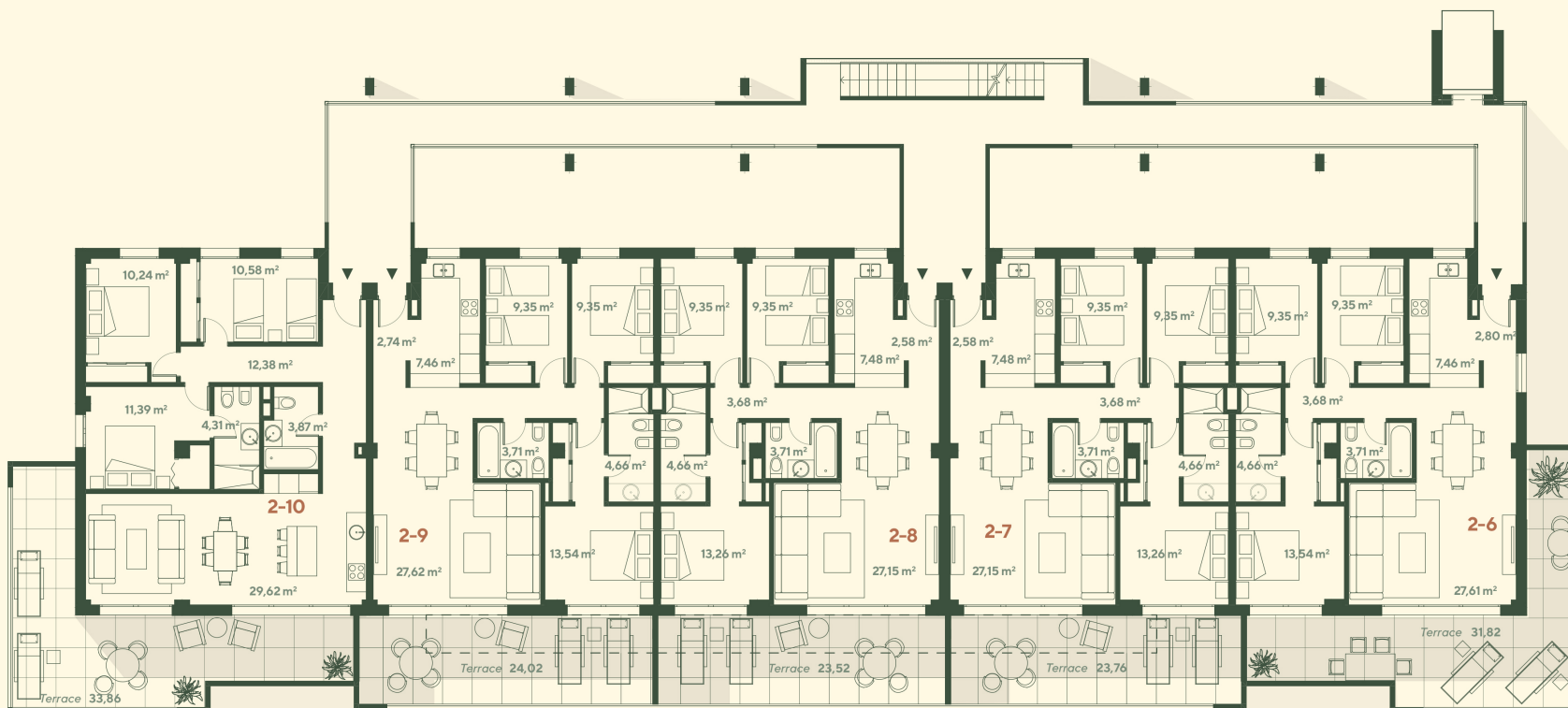
Block 2

2 floor



Rayos del Sol

Apartments



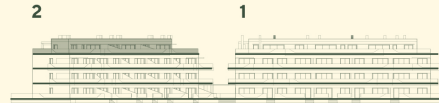
SEA VIEW

	Apartment 2-10		Apartment 2-9		Apartment 2-8		Apartment 2-7		Apartment 2-6	
	useful area:	build area:	useful area:	build area:	useful area:	build area:	useful area:	build area:	useful area:	build area:
apartment	82,39 m ²	97,41 m ²	82,16 m ²	95,2 m ²	81,22 m ²	95,2 m ²	81,22 m ²	95,2 m ²	82,16 m ²	97,17 m ²
Covered terrace			7,89 m ²	7,98 m ²	10,02 m ²	10,19 m ²	7,18 m ²	7,26 m ²		
Uncovered terrace	33,86 m ²	37,12 m ²	16,13 m ²	17,86 m ²	13,5 m ²	15,06 m ²	16,58 m ²	18,3 m ²	31,82 m ²	35,03 m ²
total area	116,25 m ²	134,53 m ²	106,18 m ²	121,04 m ²	104,74 m ²	120,45 m ²	104,98 m ²	120,76 m ²	113,98 m ²	132,2 m ²



Block 2

3 floor



Rayos del Sol

Apartments



Apartment 3-6

useful area: build area:

63,89 m² 76,34 m²
75,53 m² 80,79 m²

138,42 m² **157,13 m²**

Apartment 3-5

useful area: build area:

77,32 m² 90,9 m²
44,52 m² 46,83 m²

121,84 m² **137,73 m²**

Apartment 3-4

useful area: build area:

82,91 m² 100,68 m²
77,01 m² 81,27 m²

159,92 m² **181,95 m²**

apartment
Uncovered terrace

total area



SEA VIEW