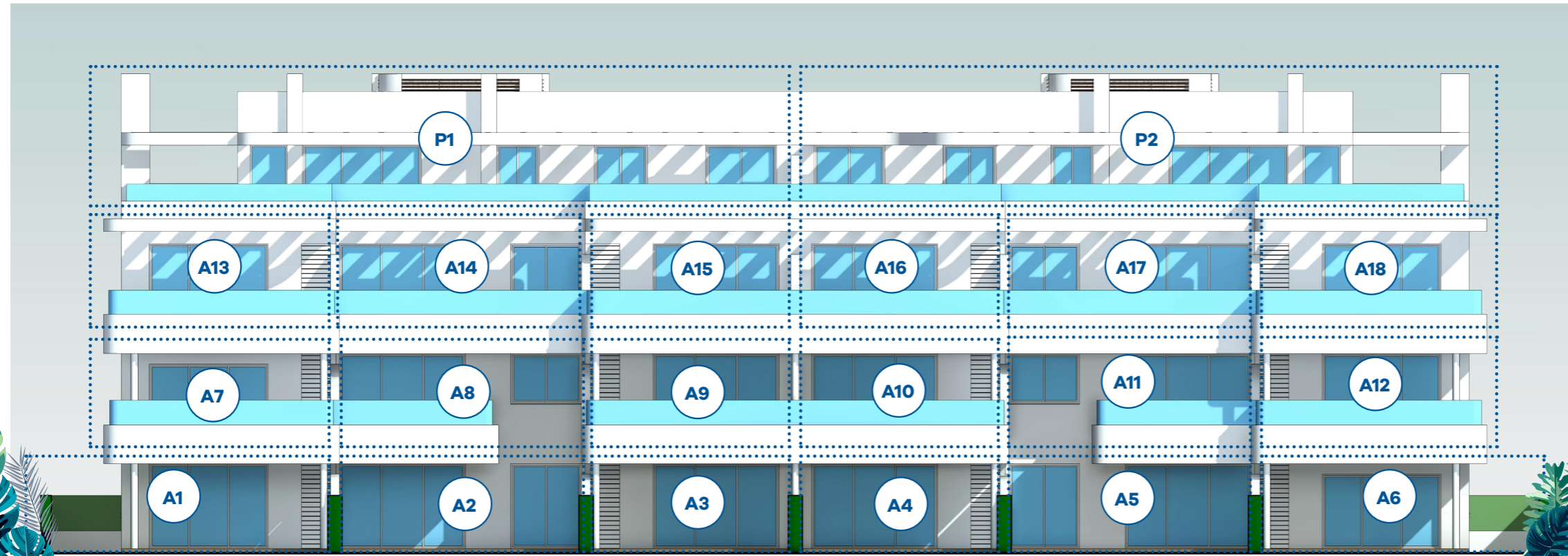


DRAFT

ADELFA



- A1** - 2 BED GARDEN APARTMENT + 2 Parking Spaces
- A2** - 1 BED GARDEN APARTMENT + 1 Parking Space
- A3** - 2 BED GARDEN APARTMENT + 1 Parking Space
- A4** - 2 BED GARDEN APARTMENT + 1 Parking Space
- A5** - 1 BED GARDEN APARTMENT + 1 Parking Space
- A6** - 2 BED GARDEN APARTMENT + 2 Parking Spaces

- A7** - 2 BED APARTMENT + 2 Parking Spaces
- A8** - 1 BED APARTMENT + 1 Parking Space
- A9** - 2 BED APARTMENT + 1 Parking Space
- A10** - 2 BED APARTMENT + 1 Parking Space
- A11** - 1 BED APARTMENT + 1 Parking Space
- A12** - 2 BED APARTMENT + 2 Parking Spaces

- A13** - 2 BED APARTMENT + 2 Parking Spaces
- A14** - 1 BED APARTMENT + 1 Parking Space
- A15** - 2 BED APARTMENT + 1 Parking Space
- A16** - 2 BED APARTMENT + 1 Parking Space
- A17** - 1 BED APARTMENT + 1 Parking Space
- A18** - 2 BED APARTMENT + 2 Parking Spaces

- P1** - 3 BED PENTHOUSE + 2 Parking Spaces
- P2** - 3 BED PENTHOUSE + 2 Parking Spaces

oneeden.com

NOV 23

All content and images which appear in the following marketing materials are merely illustrative and non-contractual. They may be subject to technical changes for legal/administrative purposes which may be imposed by any competent authority. The property shown will contain fixtures and fittings as stated in the technical specifications. Any furniture that appears in the CGIs of the interior is not included (save for the fitted kitchen) in the sale of the property and is simply indicative of how the client may choose to use the space. For more information, the Abbreviated Information Document (DIA) is available to view in accordance with Decree 218/2005 of 11 October which brings into effect the Consumer Information Regulation in the sale and leasing of homes in Andalusia. Todo contenido e imágenes que aparecen en este folleto publicitario son meramente ilustrativas y carecen de valor contractual, estando sujetas a modificaciones técnicas ordenadas por la dirección facultativa o jurídico/administrativas obligadas por la autoridad competente. El inmueble se dotará con el equipamiento indicado en la memoria de calidades. Todo el mobiliario que aparece en las infografías interiores no está incluido (salvo los muebles específicos de cocina) en la venta del inmueble ya que tiene simplemente como finalidad la evaluación del espacio por el cliente. Para mayor información, está a su disposición el Documento Informativo Abreviado (DIA) conforme al Decreto 218/2005, de 11 de octubre, por el que se aprueba el Reglamento de información al consumidor en la compraventa y arrendamiento de viviendas en Andalucía.

